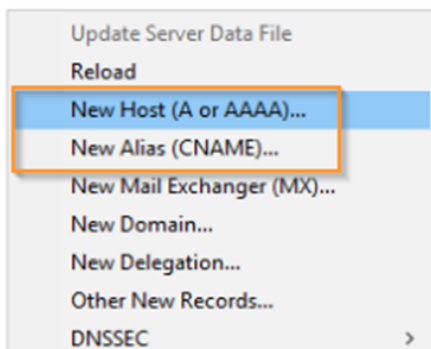


DNS Setup

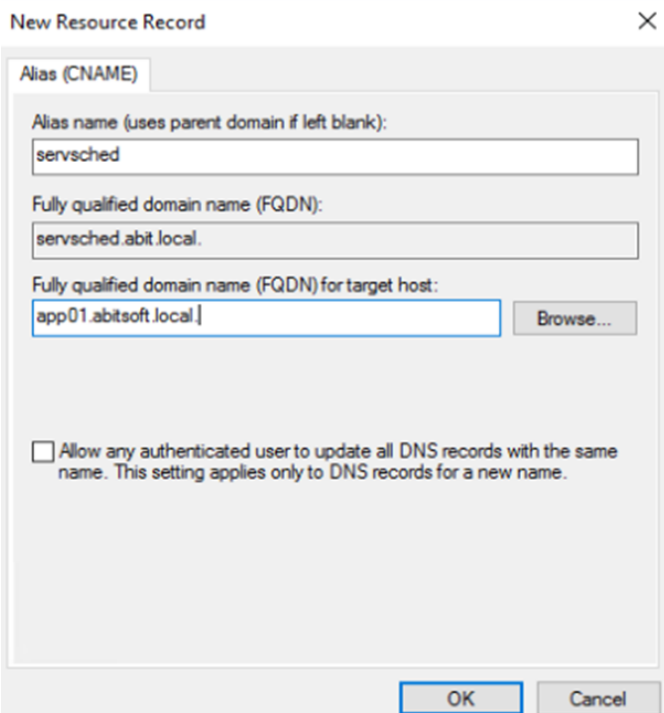
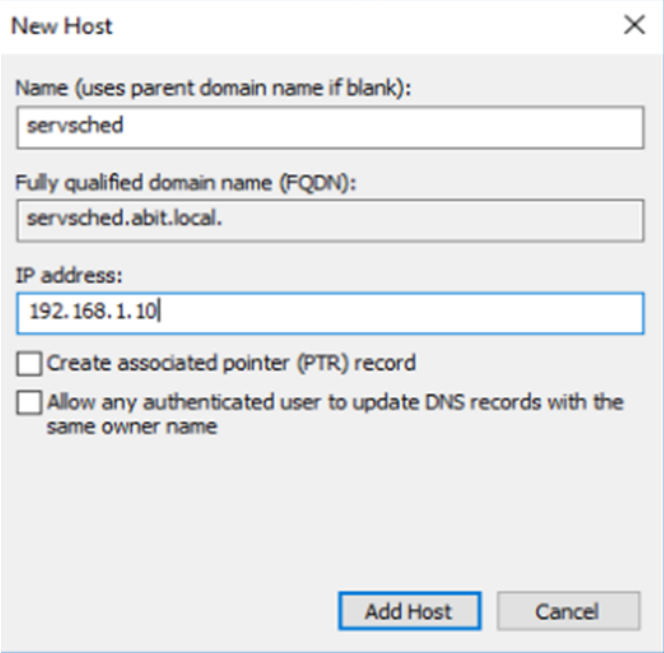
ABit software products support a DNS lookup option for clients to auto discover the server. This works using a SRV record on your DNS server.

Create DNS record for product.domain (eg servsched.abit.local)

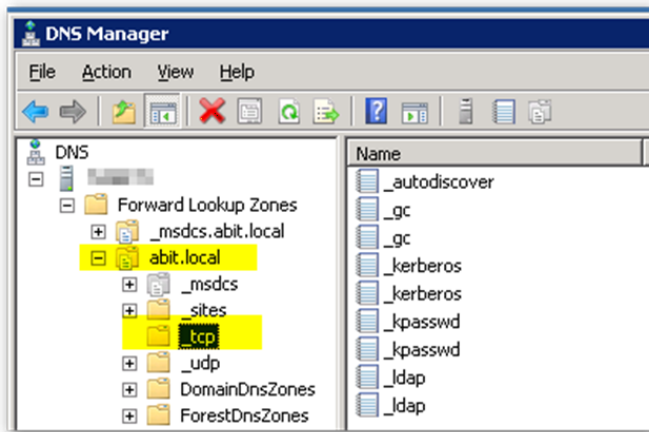
This is an optional step but recommended step. By providing a DNS name you can easily direct users to <http://servsched:8090> for client installation.



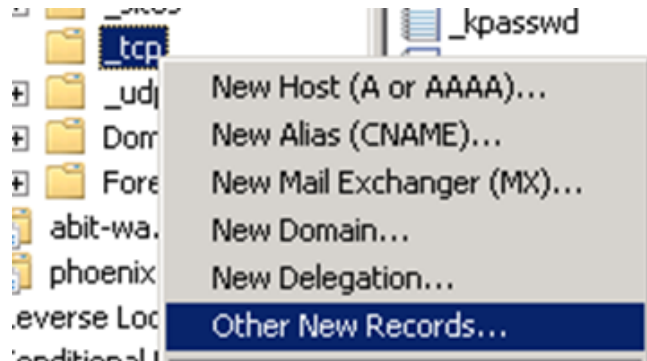
Pick one of the two options, create a CNAME record to the name of the current server or a new A record entry to the IP address.

	CNAME example
	A record example

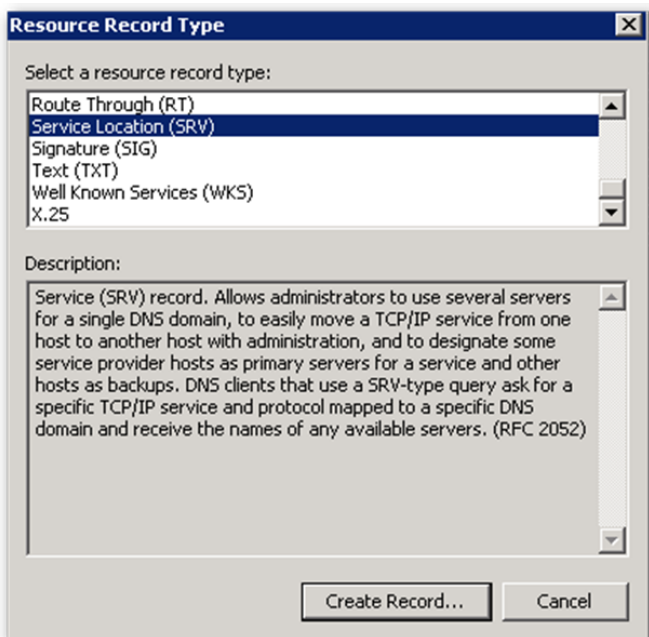
Create DNS SRV record



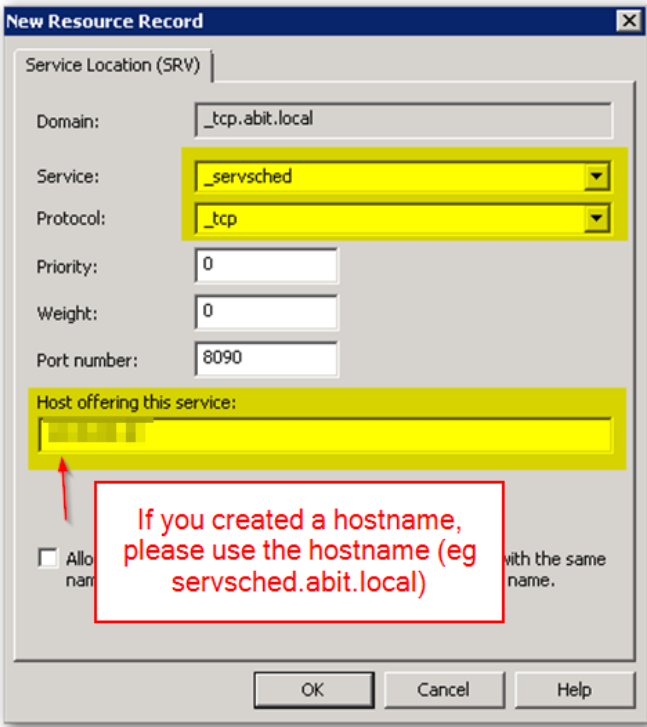
Navigate to _tcp for your active directory domain.



Right click and select Other New Records...



Select Service Location (SRV)



Enter a service name of _servsched, protocol _tcp and ensure the port number and host match your server configuration.

Product default ports

Service Scheduler	8090
Police Book	8092

Testing DNS

- Click Start, and then click Run.
- In the Open box, type cmd.
- Type nslookup, and then press ENTER.
- Type set type=all, and then press ENTER.
- Type _servsched._tcp.{Domain_Name}, where Domain_Name is the name of your domain, and then press ENTER.

```
set type=all
_servsched._tcp.{domain}
```

```
> set type=all
> _servsched._tcp.abit.local
Server: ██████████
Address: ██████████
```

```
_servsched._tcp.abit.local      SRV service location:
```

```
    priority = 0
```

```
    weight = 0
```

```
    port = 8090
```

```
    svr hostname = app01.abitsoft.local
```

```
app01.abitsoft.local    internet address = ██████████
```

```
app01.abitsoft.local    AAAA IPv6 address = ██████████
```

```
> |
```

Revision #2

Created 7 August 2024 05:12:44 by Tristan Marlow

Updated 7 August 2024 05:38:44 by Tristan Marlow